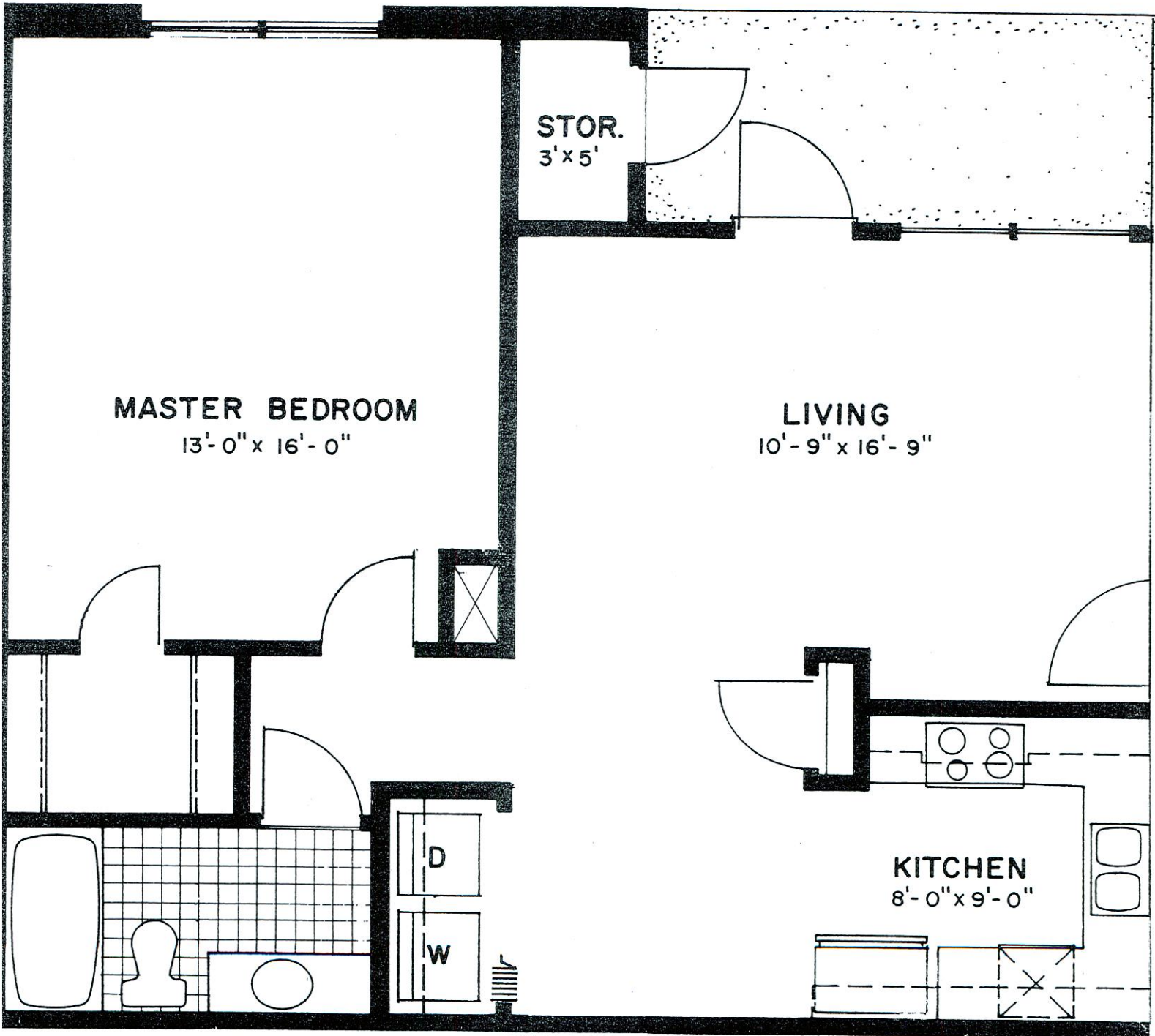


# AZALEA



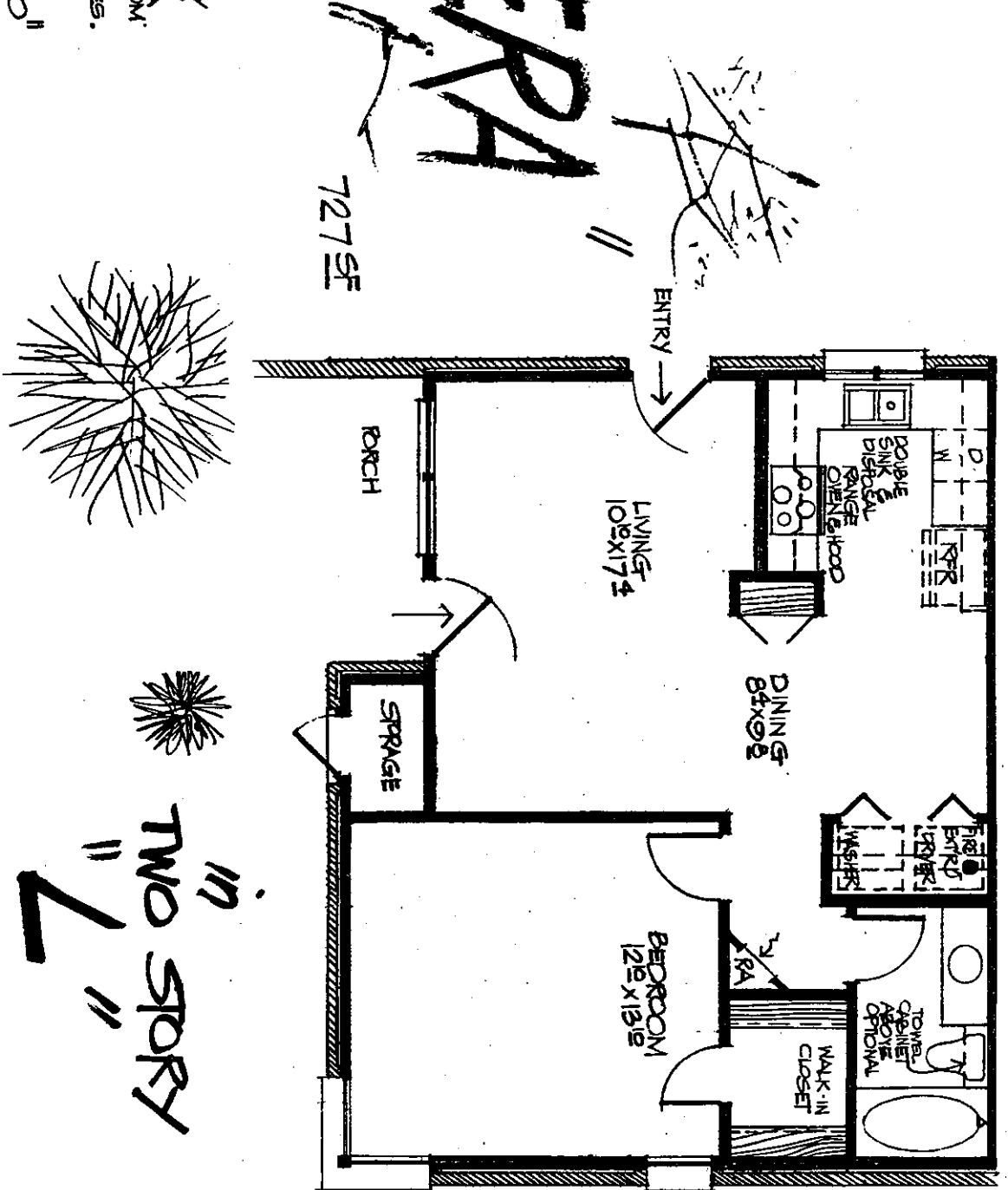
The Azalea, with 790 sq. ft. of living area, is located in our two-story building. This one-bedroom home is complete with a living and dining combination, bath and walk-in closet. The downstairs model has a covered porch and the upstairs has a balcony. Both have outside storage.

*Handwritten signature*

**CLEVERA**

(±)

WRITTEN DIMENSIONS INDICATE APPROXIMATE CLEAR SPACE BETWEEN INSIDE SURFACES OF WALLS AND MAY VARY FROM ACTUAL BUILT DIMENSIONS DUE TO CONSTRUCTION TOLERANCES. THE GRAPHIC SCALE IS PROVIDED AS A CONVENIENCE ONLY AND MAY VARY FROM WRITTEN DIMENSIONS DUE TO PAPER INSTABILITY IN CHANGING ATMOSPHERES.



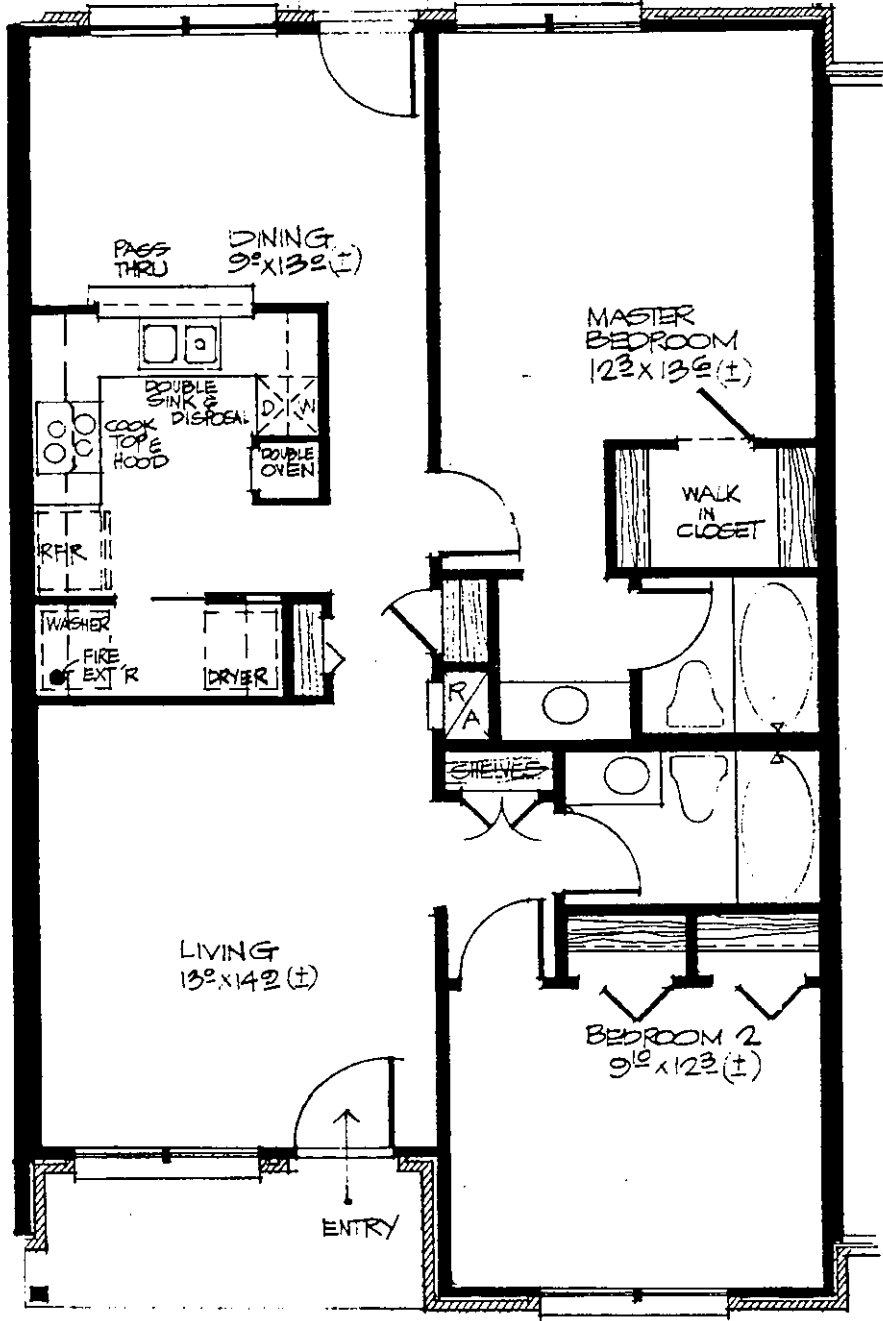
727 SF

**in**  
**TWO STORY**

FLOOR PLAN 1/4"=1'-0"

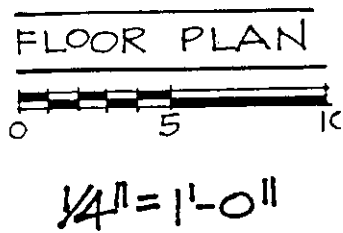


NO. OF  
OF BUI  
TION  
C  
ANI  
S  
S  
SII

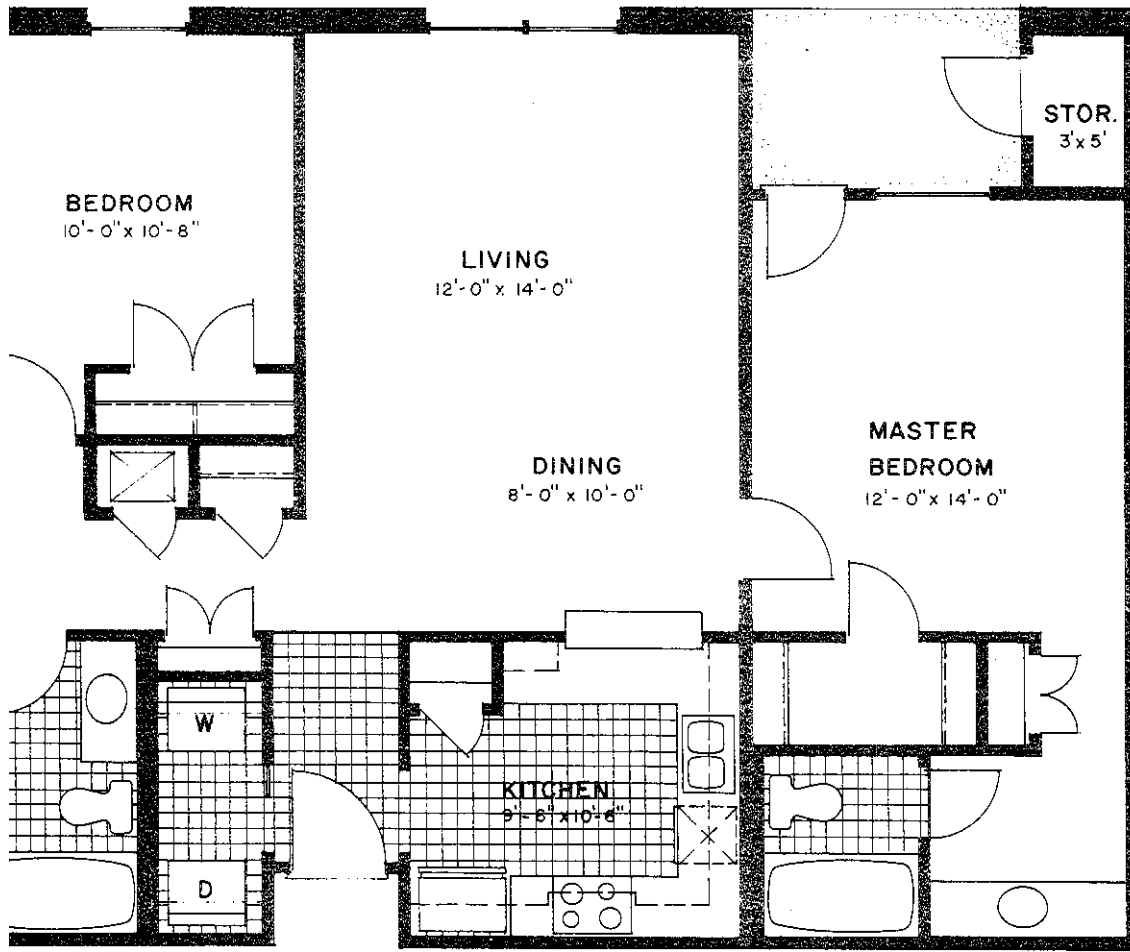


1071 SE

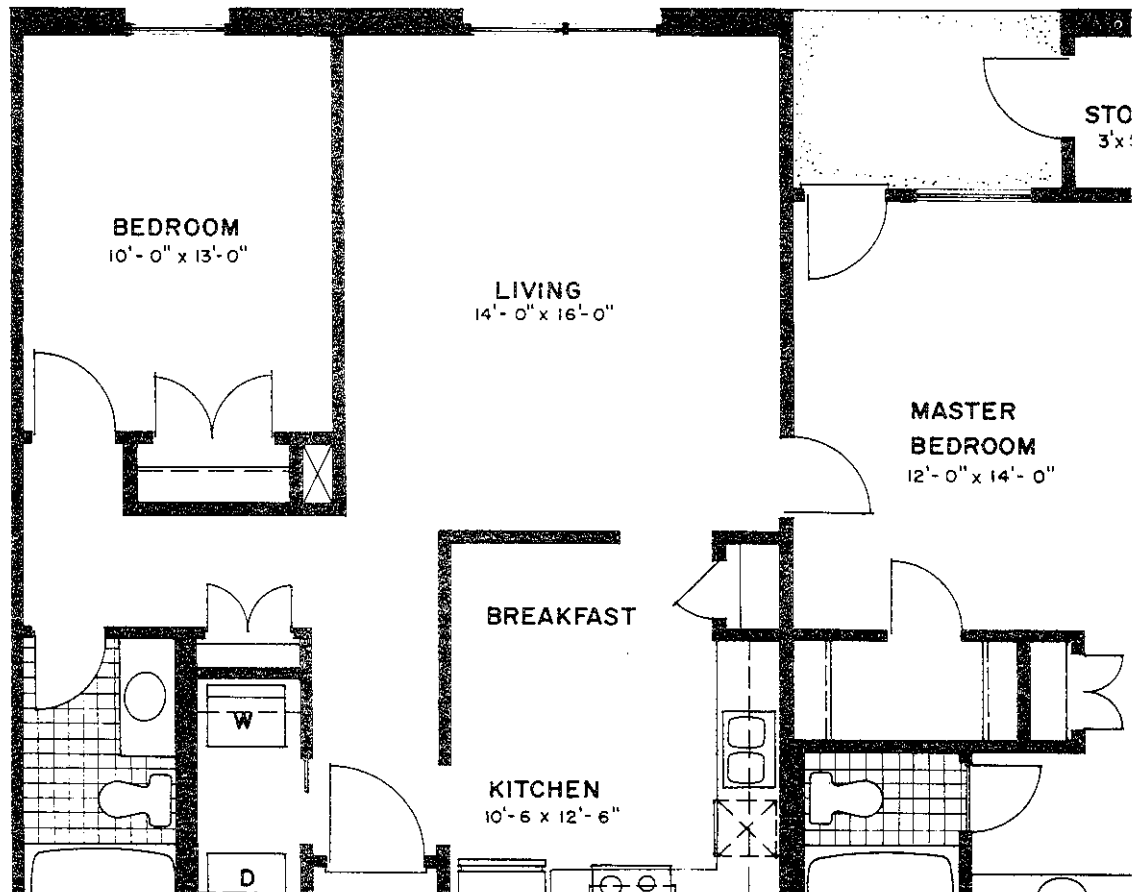
The "HIBISCUS"  
in VILLAGE WOODS



# JASMINE "A"

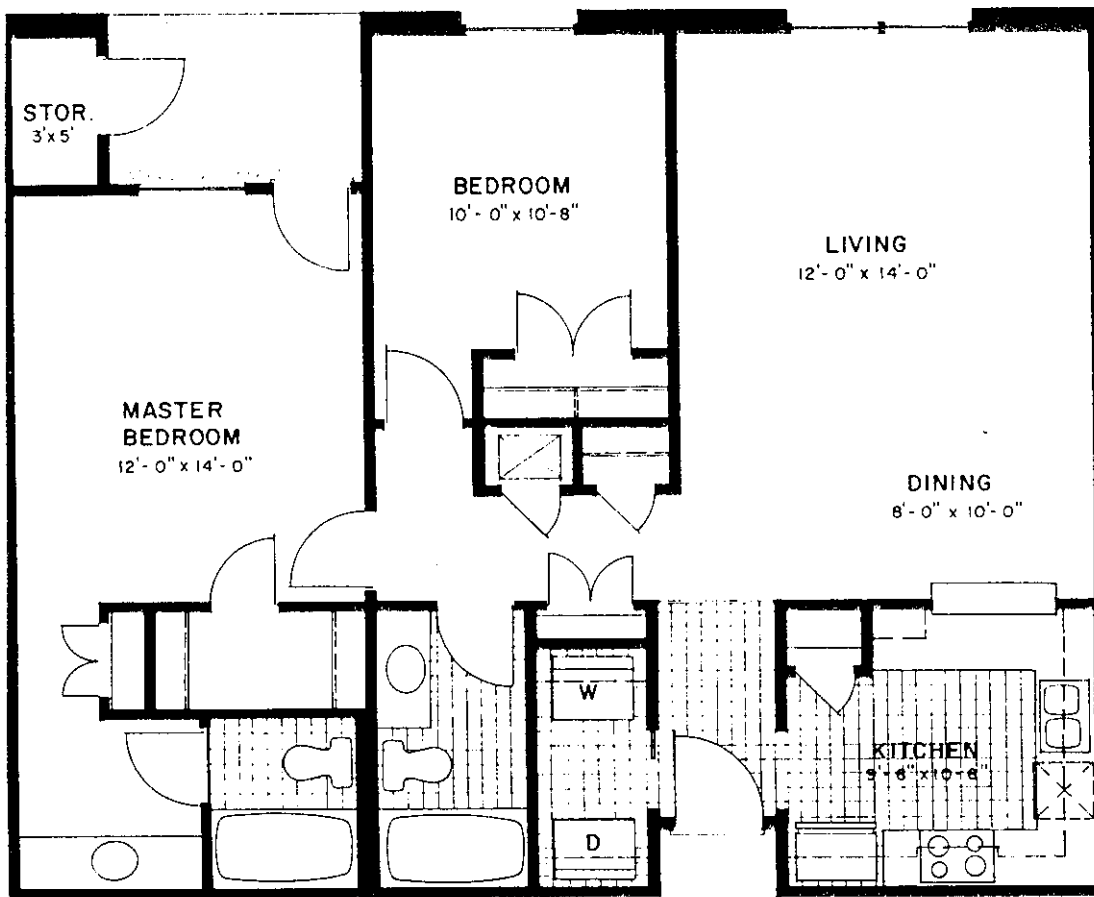


# JASMINE "B" With Breakfast Area

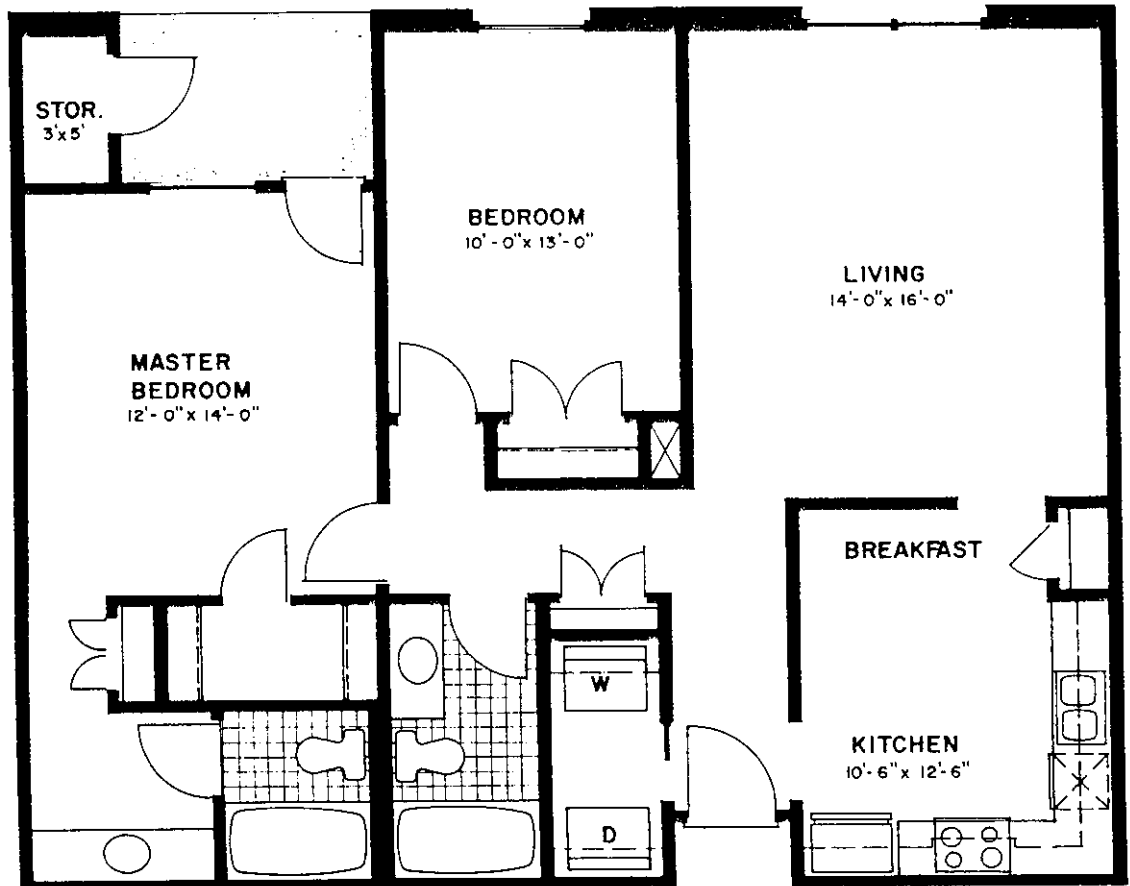


The Jasmine, located in our two-story building, has 1,090 sq. ft. of living area. This home separates the two-bedrooms, two baths, by a spacious living and dining area. The master bedroom has a walk-in closet and a separate dressing room. Plan "A" of the Jasmine features a pass through to the dining area while plan "B" has a larger country kitchen with breakfast area.

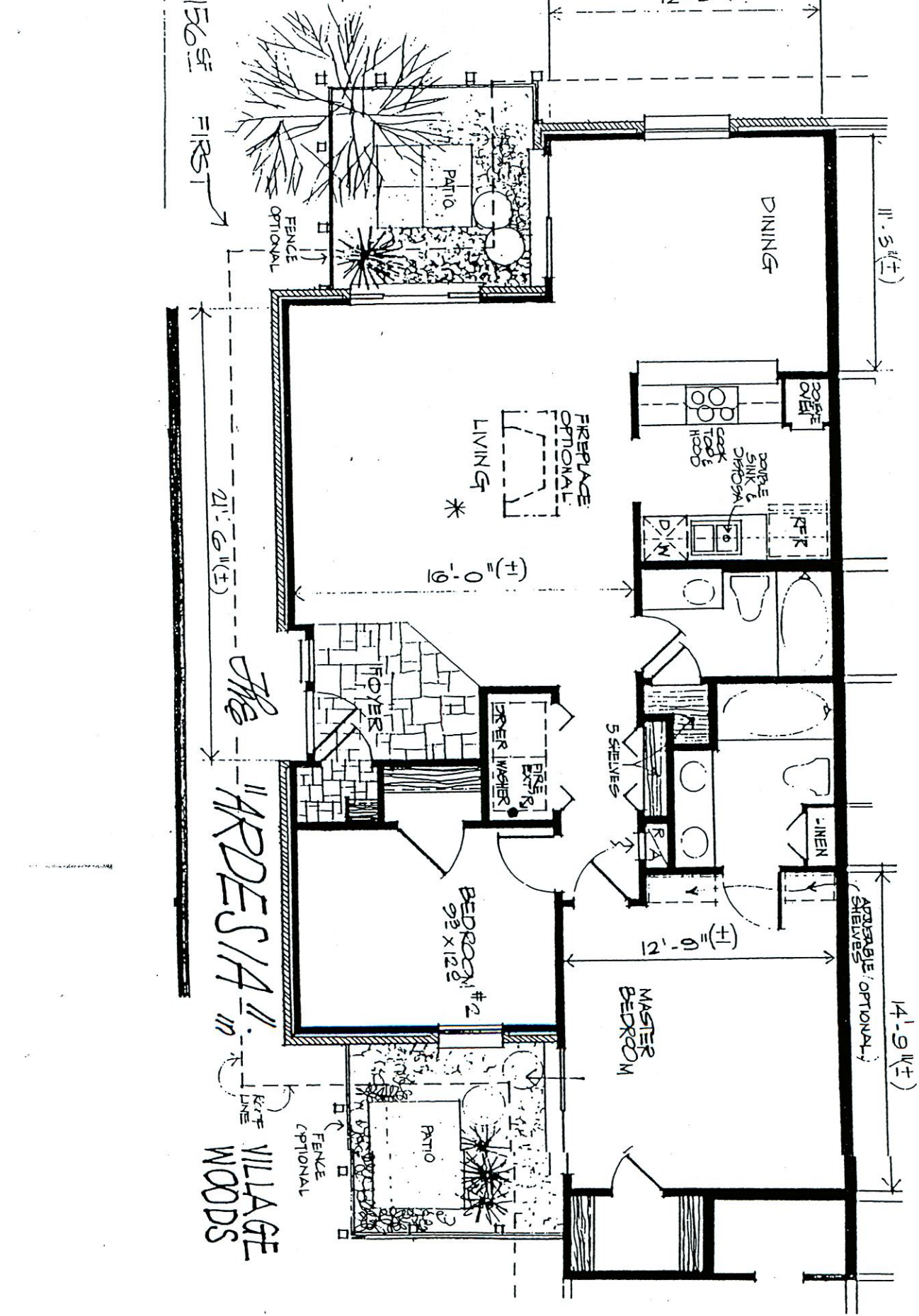
# MAGNOLIA "A"



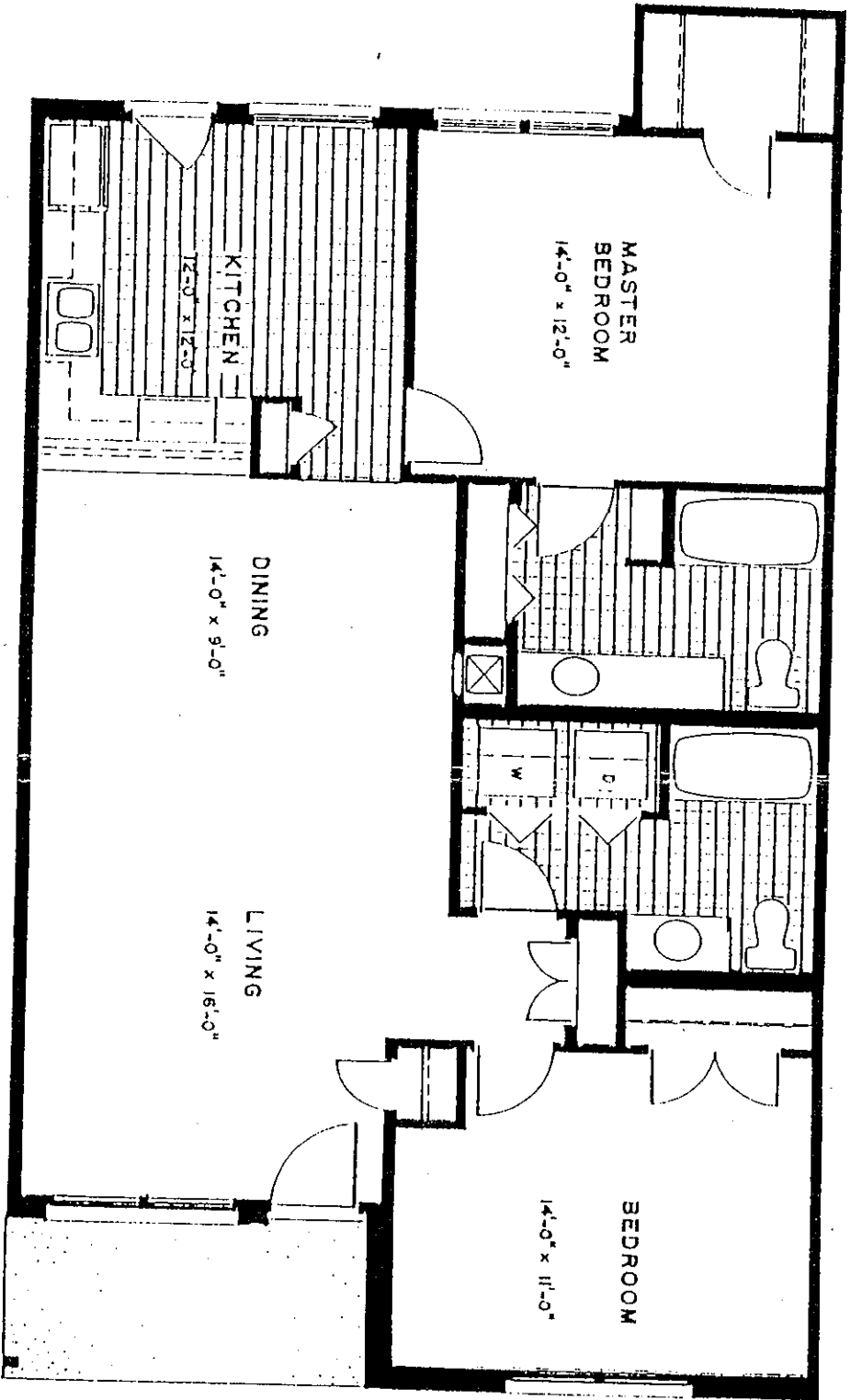
# "B" MAGNOLIA With Breakfast Area



The Magnolia, located in our two-story building, has 1,090 sq. ft. of living area. This home has a living and dining combination. The two-bedrooms, two-baths are adjacent to each other. The master bedroom has a walk-in closet and a separate dressing room. Kitchen "A" of the Magnolia features a spacious pass through to the dining area, while kitchen "B" has a larger country kitchen with breakfast area.

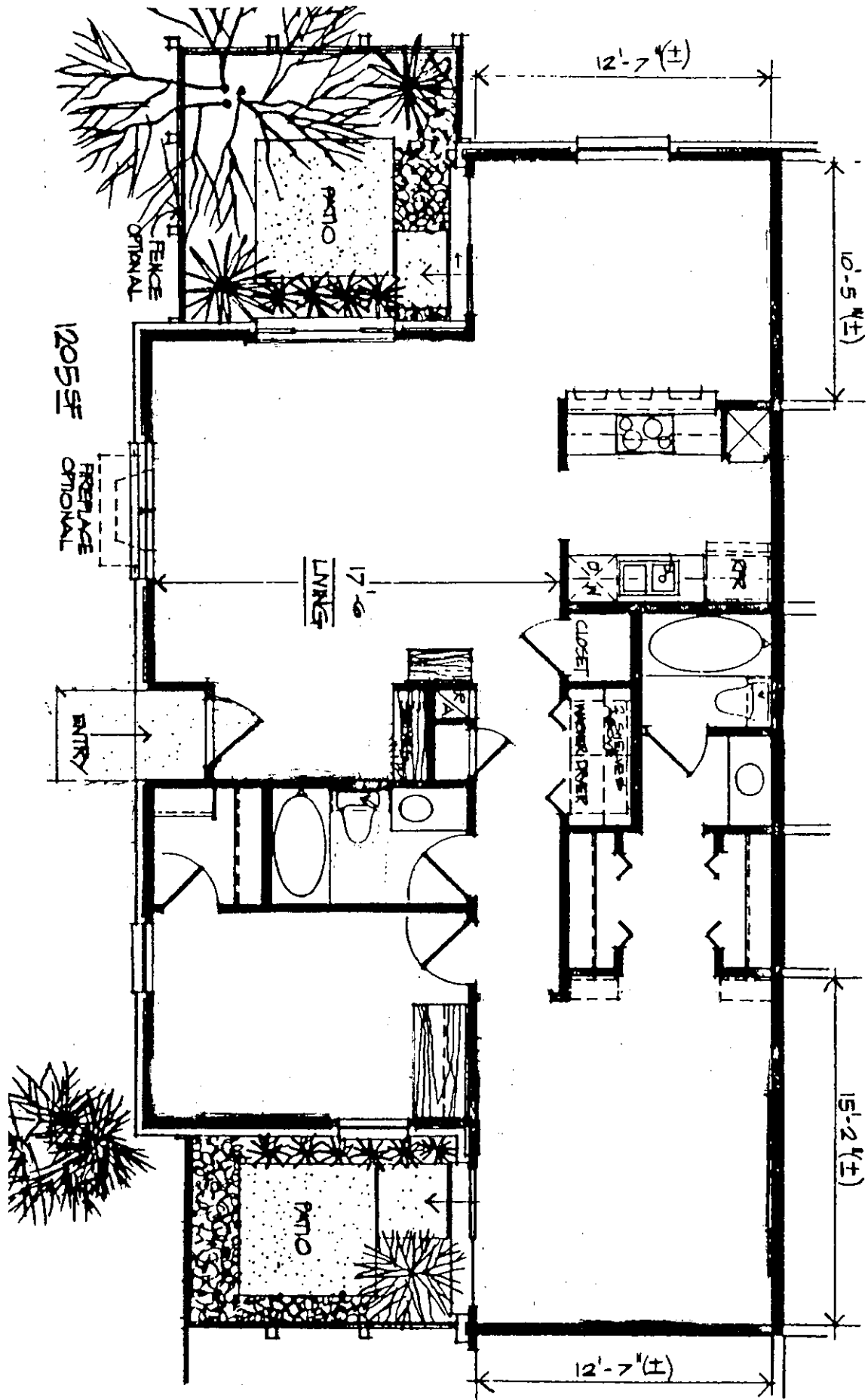


# WISTERIA



The Wisteria, with 1168 sq. ft. of living area provides maximum privacy. This home separates the two bedrooms with a spacious living and dining combination. The "airy" kitchen opens onto a patio and features pass through serving to the dining room. Both bedrooms have a private bath. The master bedroom has a spacious walk-in closet.

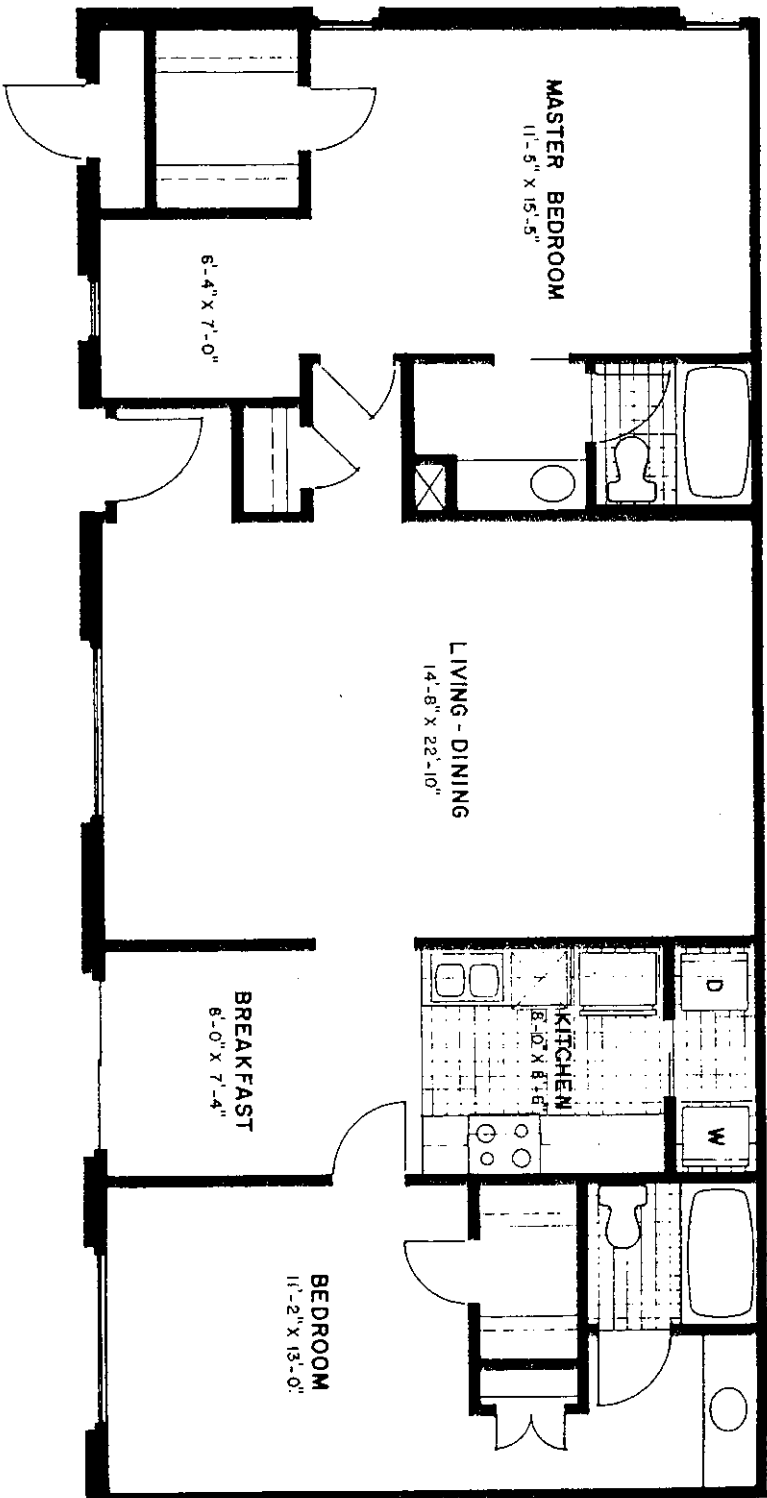




RE "ABELIA"



# BOUGAINVILLEA



The Bougainvillea, with 1,263 sq. ft. affords maximum privacy. The master bedroom suite complete with sewing room or study and private bath is on the opposite side of the house from the second bedroom and bath. Both bedrooms have large walk-in closets. The 22.10' x 14.8' living-dining room features a cathedral ceiling as does the master bedroom. The "U" shaped kitchen extends to an open breakfast room with a sliding glass door opening onto the patio.



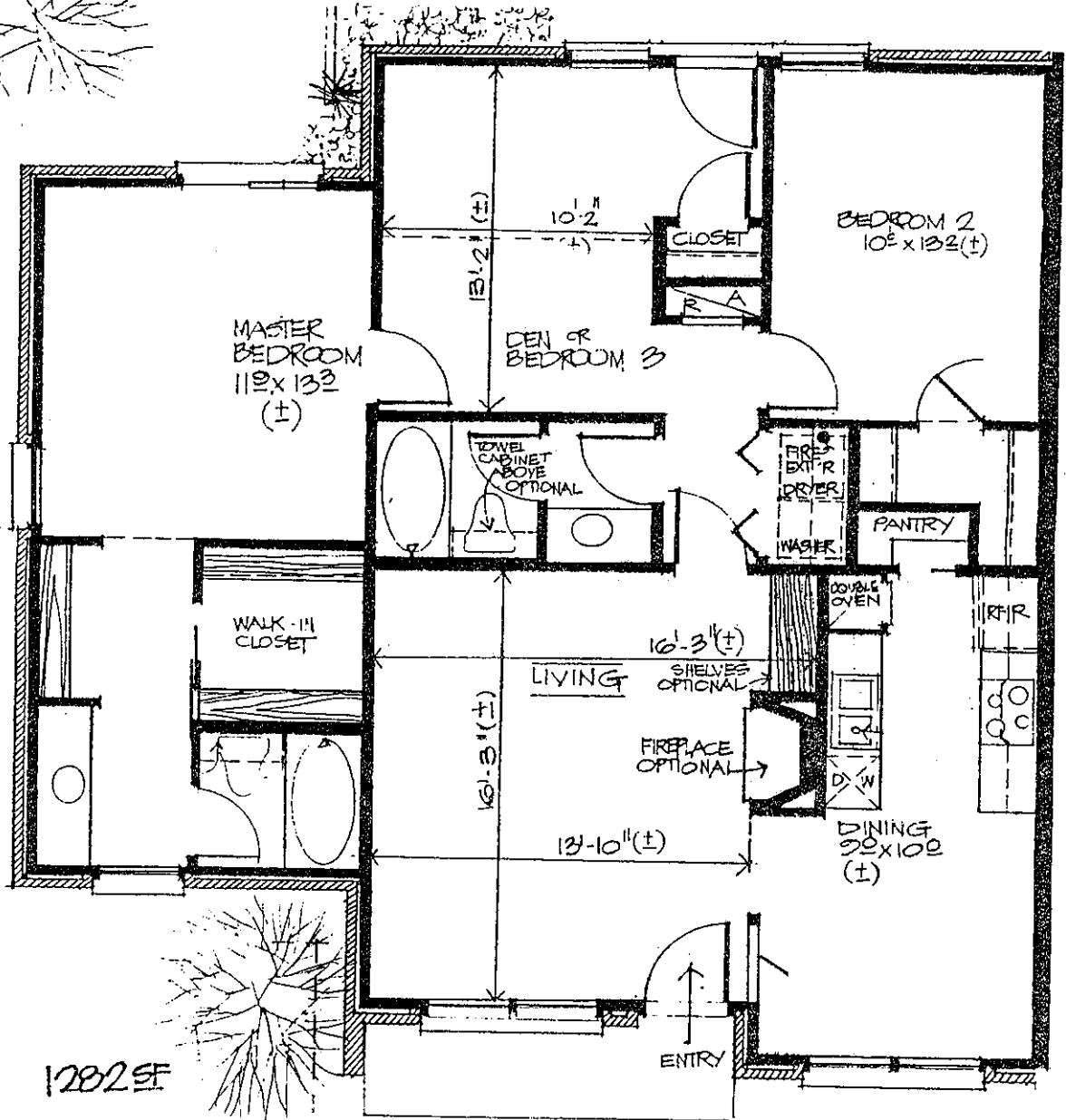
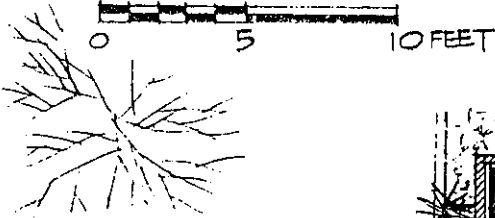
(±)

WRITTEN DIMENSIONS INDICATE APPROXIMATE CLEAR SPACE BETWEEN INSIDE SURFACES OF WALLS AND MAY VARY FROM ACTUAL BUILT DIMENSIONS DUE TO CONSTRUCTION TOLERANCES. THE GRAPHIC SCALE IS PROVIDED AS A CONVENIENCE ONLY AND MAY VARY FROM WRITTEN DIMENSIONS DUE TO PAPER INSTABILITY IN CHANGING ATMOSPHERES.

\* SLOPED CEILING OPTIONAL

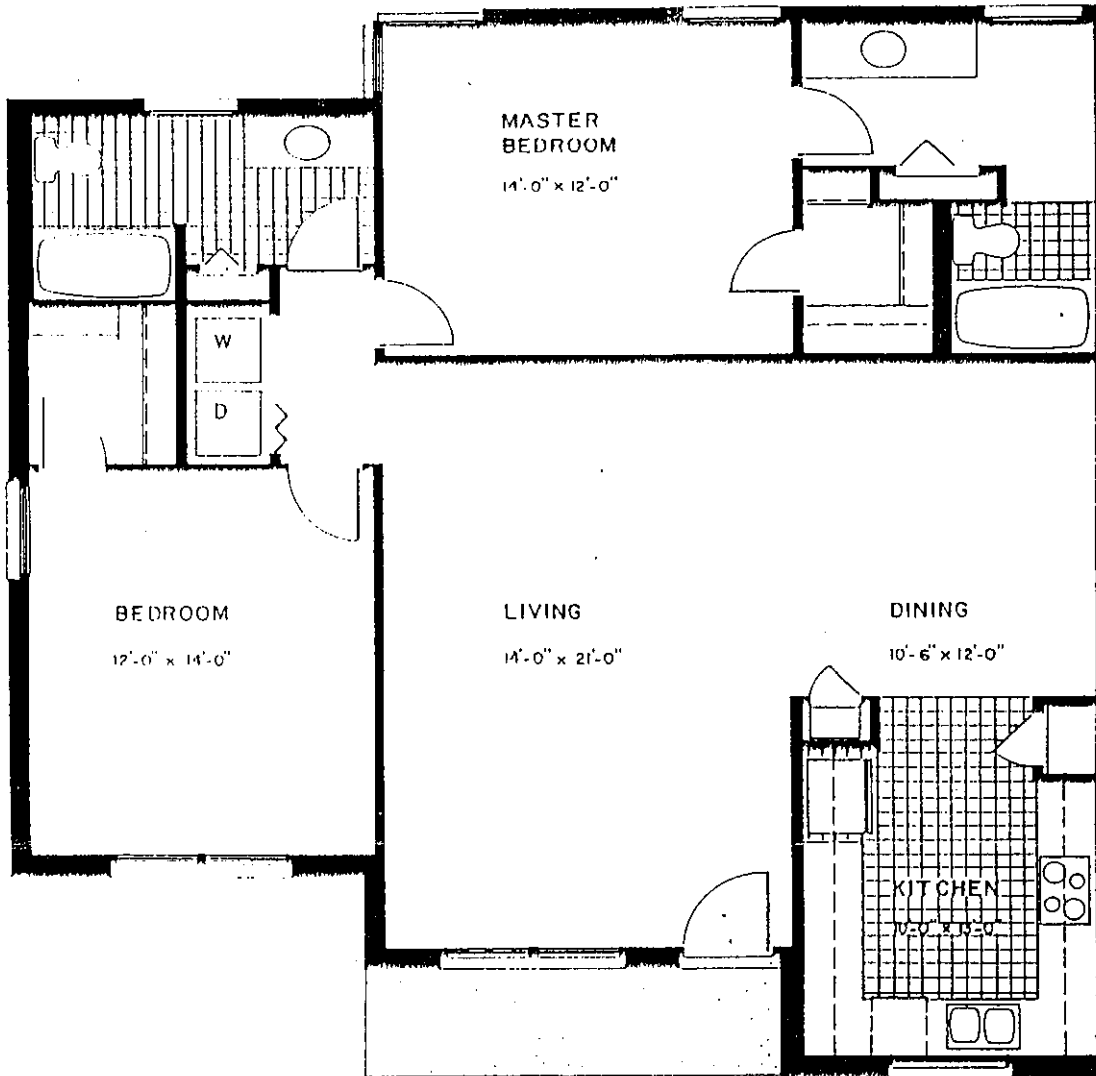
FLOOR PLAN

SCALE: 1/4" = 1'-0"



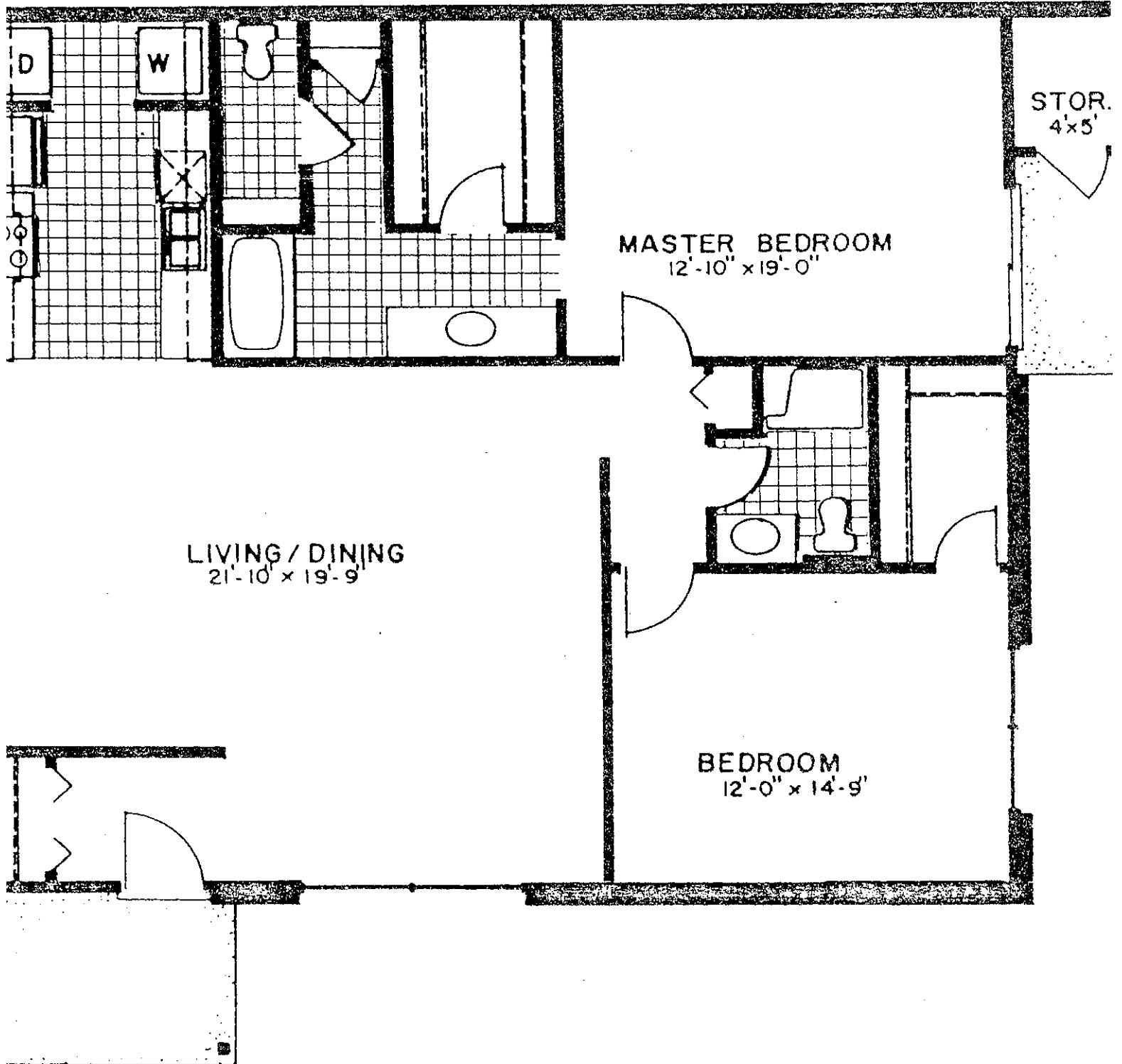
The "GARDENIA"

# COLUMBINE



The Columbine, with 1306 sq. ft. of living area provides a spacious 14' x 21' living room. Generous use of glass brightens the kitchen and opens onto beautiful surroundings. Both large bedrooms have a separate bath and spacious walk-in closets. The master bedroom has a private dressing area.

# LANTANA



The Lantana, the largest home at Village Woods, has 1,367 sq. ft. or 1,614 sq. ft. with its optional loft. Overlooking the 19.9' x 14' living room, the loft expands visual space and can be used as a den, an office or a guest room. Both bedrooms have private baths and spacious walk-in closets. Other features include an all-electric kitchen and outside storage.